

GOLDEN



NUGGET

PRESIDENT'S MESSAGE

Greetings Fellow Rockhounds,

March is here and springtime is right around the corner. You all know what that means? We have to wash the yellow pollen off our outdoor rocks.

I hope everyone has found our new meeting location at the Perry Hill Methodist Church and enjoying the return of snacks and refreshments back at our club meetings. In the early days of our club, the club had a silver punch bowl to serve drinks. With that, we need volunteers to sign up to bring snacks and refreshments each month and we will begin publishing the refreshment list here in our newsletter.

We are also looking for volunteers to sign up each month to present a Rock of the Month Entry for our newsletter and club meeting. You will need to write a small article about your favorite rock a, provide some photos, and then bring specimens of your Rock of the Month to the next gem club meeting.

Upcoming Activities for our gem Club:

On March 30, 2024 our club will be hosting our annual New Members annual collecting field trip to the Hogg Mine in LaGrange, Georgia. This mine is about 2 hours east of Montgomery at exit 13, interstate 1-85. The cost is \$35 for adults, kids 17 and under are free with a paying adult. We will be able to collect all the rose quartz, some beryl and some tourmaline. The club will provide a hand cart and club members to help carry out any large yard rocks you want or just help carry out a heavy 5-gallon bucket. The club will have bottled water and some snacks for club members on this field trip.

The weekend of April 6-7, 2024 the Dothan Gem and Mineral Club, aka the Wiregrass Rockhounds, will be hosting their annual Gem Show. The club is hosting their show at the Landmark Park at the Stokes Activity Barn in Dothan, Alabama. I believe the park charges a small nominal admission fee. Club member Gary Chinberg has been a dealer at this show in the past and will be there again this year.

On April 13, 2024 the club will be visiting Sylacauga, Alabama to experience the magic of Marble Festival in downtown Sylacauga. A group of 25+ master carvers from around the globe will descend to the heart of the Alabama marble belt to display their artistic talents. There will be live marble sculpting exhibitions, hands-on experiences with the sculptors, free marble chips to pick up, a tour of the local library where they have dozens upon dozens of expert marble sculptures, and a gift shop to buy marble products. Then we can take a short drive to

the marble quarry overlook to observe the quarry operations and collect additional marble rocks. We then can enjoy a lunch together as a club. This was a fun event last year and it's just a quick hour+ drive up Hwy 231.



In this issue:

President's Message.

Program Director Message.

FEB Minutes

Rock 'o the Month

Board Members Info.

Upcoming Events

AFMS Code of Ethics



Other activities we have planned for 2024 include a weekend trip in late April/early May to Noccalulla Falls and Cathedral Caverns in NE Alabama and a late May trip to Dismals Canyon and Natural Bridge Park in NW Alabama. We are also planning additional cave tours to various tourist caves this summer. In August 2024 we plan on returning to our annual collecting trip on Uphapee Creek at the Barkley Farm in Macon County. We need your input, ideas, and thoughts on how to make these events happen. Please let us know what you want to do.

Keep on Rocking!

Chris Rutherford, President

chris-rutherford@sanderslead.com

MARCH 15-16-17
 BELLPOINT GEM SHOW



COBB CIVIC CENTER
 548 S MARIETTA PKWY
 MARIETTA GA



GEMMY WONDERLAND

#WIREGRASS ROCKHOUDS

DOTHAN GEM & MINERAL SHOW

GEMS • CRYSTALS • FOSSILS
 LAPIDARY • JEWELRY • ARTIFACTS
 SILENT AUCTION • DOOR PRIZES


Saturday, April 6, 2024
 9am - 5pm

Sunday, April 7, 2024
 10am - 4pm

Landmark Park
 Stokes Activity Barn
 430 Landmark Drive
 Dothan, AL 36303

Park Admission Fee & FREE to Park Members

For more information contact
 Jeff at (334) 673-3554 or
wiregrassrockhounds.com.
 Find us on Facebook!





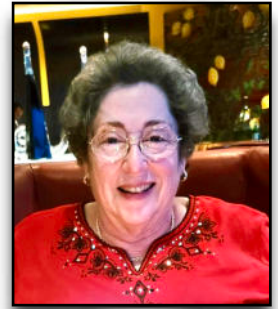
PROGRAM DIRECTOR

The March program will be a Nova video presentation, "Rise of the Mammals."

Sixty-six million years ago, an asteroid wiped out the dinosaurs in a fiery global catastrophe. But we know little about how their successors, the mammals, recovered and took over the world. Now, hidden inside ordinary-looking rocks, an astonishing trove of fossils reveals a dramatic new picture of how rat-sized creatures ballooned in size and began to evolve into the vast array of species.

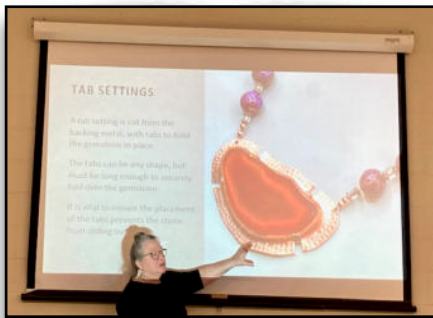
Please remember to bring any rocks that resemble food.

Clare



FEB Meeting

New Club member Beth Wicker gave a presentation on how to set odd shape stones in silver, while also sharing with us several of her jewelry pieces.





Secretary's FEB Minutes

The meeting was called to order by president Chris Rutherford. He welcomed our guest, and acknowledged the February Birthdays. Happy Birthday Chris!

Iris delivered the treasurers' report.

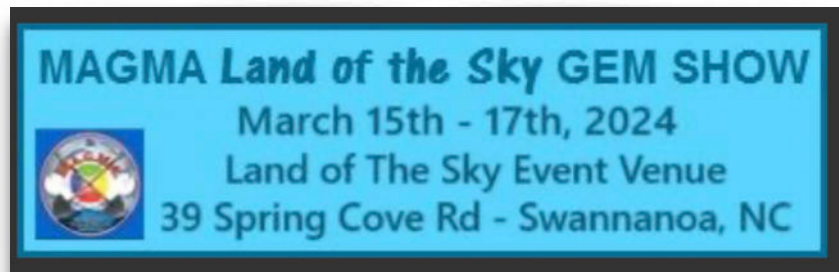
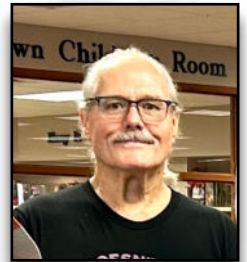
It was announced that Frankie had decided to resign as the show chairman. Chris will be acting chairman with some help from Claire. Violet will remain as show treasurer. Thanks for a great job Frankie!

Magnolia Brown has agreed to be our club Field Trip Chair.

The club has a field trip planned for La Grange Hogg Mine Saturday March 30th. Rose quartz, black tourmaline, and blue beryl can be found. Large yard rocks of quartz can also be collected. Claire would like the club to be on the lookout for rocks and minerals resembling food items so we eventually have a rock food table to display at the show.

Everyone enjoyed snacks and drinks provided by Candice and David.

Our presentation for the night was by Beth Wicker, an accomplished silversmith and jewelry designer. She had an excellent visual presentation on traditional and non traditional stone setting techniques as well representative pieces. The meeting was then adjourned.





February Rock of the Month: Amethyst

By Frankie Boothman



Amethyst is the birthstone for February and the gem for the 6th and 17th wedding anniversaries. Amethyst was as expensive as ruby and emerald until the 19th Century, when Brazil's large deposits were discovered. It was believed to prevent intoxication—amethystos means “not drunk” in ancient Greek. Today, as the most valued quartz variety, amethyst is in demand for designer pieces and mass-market jewelry alike, and its purple to pastel hues retain wide consumer appeal.

ST. VALENTINE: The patron of romantic love wore an amethyst ring carved with the image of Cupid.

CAMILLO LEONARDI: The astrologer wrote that amethyst quickens intelligence and gets rid of evil thoughts.

FACTS: Mineral: Quartz; Chemistry: SiO₂; Color: Purple; Refractive Index: 1.544 to 1.553; Birefringence: 0.009; Specific Gravity: 2.66; Mohs Hardness: 7;

Geological Setting

Very common, in many different environments. The commercially most important occurrences are in volcanic rocks, where amethyst crystals outline former gas cavities. In low and medium temperature hydrothermal veins associated with iron ores. As late overgrowth ("scepter quartz") on quartz in pegmatite and alpine-type environments.

Amethyst Description

Amethyst is the purple variety of the quartz mineral species. It's the gem that's most commonly associated with the color purple, even though there are other purple gems such as sapphire and tanzanite. Its purple color can be cool and bluish, or a reddish purple that's sometimes referred to as “raspberry.”

Amethyst's purple color can range from a light lilac to a deep, intense royal purple, and from brownish to vivid. Amethyst also commonly shows what is called color zoning, which in the case of amethyst usually consists of angular zones of darker to lighter color.

Does Amethyst Make a Good Jewelry Stone?

As a variety of quartz, amethysts have the hardness (7) and wearability to be used in any type of jewelry setting, including rings.

Distinguishing Amethysts from Similar Gemstones

Amethysts may appear similar to other popular transparent gemstones such as sapphires, spinels, and rhodolite garnets. However, since these gems occur rarely in purple colors, you're more likely to encounter amethysts misidentified as these rarer and more expensive stones. Nevertheless, these gems have notable differences in both optical and physical properties. Sapphires, spinels, and rhodolites all have higher refractive indices (RI), and spinels and rhodolites are also isometric. They also all have greater specific gravity values.

How Does Amethyst Get Its Color?

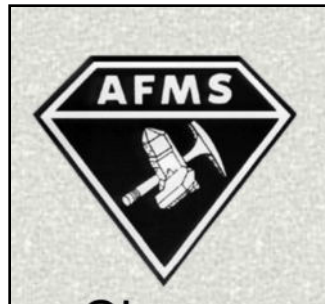
Natural amethyst receives its color from the presence of iron and other trace elements as well as natural irradiation. Amethysts may show color zoning, both uneven (unintentional) color distribution as well as color bands (intentional).





We are members of the Southeast Federation of Mineralogical Societies.

We are members of the American Federation of Mineralogical Societies.

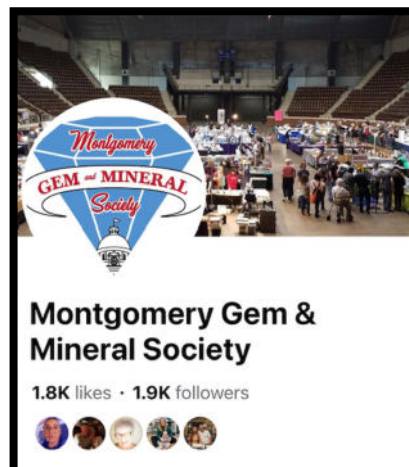




Check out classes offered at William Holland! Look over the class schedule on <https://www.sfmsworkshops.org/william-holland-classes>



Don't forget to check our our Facebook page and Website!





BOARD MEMBERS

President: Chris Rutherford 334.372.2507 president@mgms.club

First VP/Program Chair: Clare Weil 334.221.5211 clarecweil@gmail.com

Field Trips: Magnolia Brown 334.300.2501 amandamagnoliabrown@yahoo.com

Secretary: David Sherrod 334.201.4460 dsheer355@att.net

Treasurer: Iris McGehee 334.262.2197 irismcgehee2433@charter.net

Newsletter Editor: Magnolia Brown 334.300.2501 amandamagnoliabrown@yahoo.com

Webmaster: Frankie Boothman 334.590.1222 webmaster@mgms.club

Director/Shop POC: Leslie Amato 334.324.7997 lgmato@yahoo.com

Gem Mineral/Jewelry Show:


Director: Chris Rutherford 334.372.2507 president@mgms.club

Contact Chair: Clare Weil 334.221.5211 clarecweil@gmail.com

Treasurer: Violet Jones 334.354.8795 violetbjones2013@gmail.com

Publicity: Candace Rutherford 334.467.4050 publicity@mgms.club

Save the Date!



SOHO Experience
by AJS
MARCH 16-17, 2024
NEW! EXPANDED EDUCATION:
FRIDAY, MARCH 15 - MONDAY, MARCH 18
COBB GALLERIA CENTRE, ATLANTA

Atlanta Jewelry Show
2.9K likes • 3.4K followers

EVENTS:
SOHO Experience By AJS: March 16-17, 2024. AJS Fall: August 24-26, 2024 (2.5 days!)

INTRODUCING...



SOHO Experience
by AJS
INTRODUCING
NEW! EXPANDED EDUCATION:
FRIDAY, MARCH 15 - MONDAY, MARCH 18
COBB GALLERIA CENTRE • ATLANTA, GA

Shop! MARCH 16-17, 2024
Saturday • Sunday

Learn MARCH 15-18, 2024
Friday • Saturday • Sunday • Monday



UPCOMING EVENTS

4/6-7/2024 DOTHAN, AL: Dothan Alabama Gem and Mineral Club, The Wiregrass Rockhounds, Stokes Activity Barn at Landmark Park in Dothan, Alabama. April 6-7, 2024; Saturday 9AM—5PM, Sunday 10AM—4PM. Admission Free. www.wiregrassrockhounds.com Contact Jeff 334-673-3554

4/12-14/2024—RALEIGH, NC: Annual show; Tar Heel Gem & Mineral Club; Celebrating the 50th Anniversary of the Club Kerr Scott Building, NC State Fairgrounds, 4285 Trinity Rd. Raleigh, NC; Fri. 3-7, Sat. 10-6, Sun. 10-5; \$5.00 for a family of 4, \$3.00 for an individual, Free for children under 5. Admission prices are good for all 3 days of the show. Parking is free at the Kerr Scott Building. Contact Cyndy Hummel, (919) 779-6220; Email: mchummel@mindspring.com; Website: tarheelclub.org

4/20/2024 —APOPKA, FL: Wekiva Gem & Mineral Society; "Circle Up" Swap Meet, 1937 Lakeville Rd., Apopka, FL 32712; Saturday, 4/20/24—9am-3pm. Rock Clubs and Individuals are invited to set up and buy, sell and swap anything that is LAPIDARY related! Everything from slabs, rough, specimens, polished stones, finished cabochons, handmade jewelry, to tools and lapidary equipment can be swapped sold or purchased! More info at Wekivagem.com.

4/27-28/2024 MEMPHIS, TN: Memphis Archaeological and Geological Society, Memphis Agricenter 7777 Walnut Grove Road, Memphis, TN. Over 50 Dealers including the original "Memphis Rock Banquet" a full table of rocks that look like real food. April 27-28, 2024; Saturday 9AM—6PM, Sunday 10AM—5PM. Admission \$6 or 2-day pass for \$10, under 12- \$2, Scouts in uniform - Free. www.theearthwideopen.wixsite.com, email info@theearthwideopen.com. 901-490-3575

MGMS
SAVE THE DATE!
MARCH 30

Hogg Mine

(details will come later)

Jewel-Craft, Inc.

FOR JEWELERS
By Jewelers

WE'LL SEE YOU AT

Atlanta Jewelry Show

MARCH 16 - 17
 Atlanta, GA



AFMS Code of Ethics

(<http://www.amfed.org/ethics.htm>)

I will respect both private and public property and will do no collecting on privately owned land without the owner's permission.

I will keep informed on all laws, regulations of rules governing collecting on public lands and will observe them.

I will to the best of my ability, ascertain the boundary lines of property on which I plan to collect.

I will use no firearms or blasting material in collecting areas.

I will cause no willful damage to property of any kind - fences, signs, buildings.

I will leave all gates as found.

I will build fires in designated or safe places only and will be certain they are completely extinguished before leaving the area.

I will discard no burning material - matches, cigarettes, etc.

I will fill all excavation holes which may be dangerous to livestock.

I will not contaminate wells, creeks or other water supply.

I will cause no willful damage to collecting material and will take home only what I can reasonably use.

I will practice conservation and undertake to utilize fully and well the materials I have collected and will recycle my surplus for the pleasure and benefit of others.

I will support the rockhound project H.E.L.P. (Help Eliminate Litter Please) and will leave all collecting areas devoid of litter, regardless of how found.

I will cooperate with field trip leaders and those in designated authority in all collecting areas.

I will report to my club or Federation officers, Bureau of Land management or other authorities, any deposit of petrified wood or other materials on public lands which should be protected for the enjoyment of future generations for public educational and scientific purposes.

I will appreciate and protect our heritage of natural resources.

I will observe the "Golden Rule", will use "Good Outdoor Manners" and will at all times conduct myself in a manner which will add to the stature and Public "Image" of Rockhounds everywhere



Rock&Gem AFMS SUBSCRIPTION SPECIAL

Support the AFMS with your subscription/renewal to Rock&Gem

FEATURED in Rock&Gem:

- 🔍 Must-see digging destinations
- 👤 Inspiring stories about people who dig, collect and create
- 👦 Rock & Gem Kids for the young and young-at-heart
- 👨‍🔬 Expert insights about general lapidary techniques
- 📖 Identification guides
- 🛠️ Step-by-step projects



SAVE 61% on a Rock&Gem print magazine subscription.



Fill out the order form below and mail it, along with your payment information, to:
EG Media Investments LLC, PO Box 74660, Chicago IL 60675-4660

Rock & Gem	<input type="checkbox"/> 1 Year (12 issues) at \$39.95	<input type="checkbox"/> 2 Year (24 issues) at \$64.95
Method of Payment:	<input type="checkbox"/> Payment Enclosed <small>(Payable to EG Media Investments LLC)</small>	<input type="checkbox"/> Credit Card
Name on Credit Card	_____	
Credit Card No	<input type="text" value=""/>	Valid Thru <input type="text" value=""/> / <input type="text" value=""/>
Subscriber Name	_____	
Address	_____	
City	State _____	ZIP _____
Email	Phone No _____	
Signature	_____	

Order online at: www.rockngem.com/afms

P
7
3
R
N
G
0
1



WIN A TRIP TO THE FEDERATION WORKSHOP OF YOUR CHOICE

Montgomery Gem & Mineral Society Name _____
 Workshop Scholarship Program Points Sheet (revised Feb 2022)

Points	Event	Jan	Feb	Mar	Apr	May	Jun	Jul	Aug	Sep	Oct	Nov	Dec	Total
1	Attend Meeting – regular or board													
2	Attend a scheduled Field Trip													
2 per 4 hrs worked	Work at Gem Show													
2	Take club hosted workshop or class													
2	Exhibit display case at show													
2	Work setup/takedown at Gem Show													
3	Bring food or drinks to vendor dinner													
2	Recruit a new member													
3	Write an article for Golden Nugget													
5	Arrange a field trip (non-chair)													
5	Lecture to outside group													
5	Present program at meeting													
5 per year	Serve as officer or committee chair													
5	Teach club sponsored workshop													
TOTALS														

It's really simple. Keep this sheet during the calendar year. Record the points you earned each month according to points allowed in the left hand column for that event. If you accumulate 25 or more points by December 31st, turn in this form at the January meeting. The first two names drawn from forms submitted will win tuition to a Federation workshop of his or her choice at either William Holland School of Lapidary Arts or Wildacres Retreat. Members can attend classes only during the Federation sponsored weeks offered that calendar year, no exceptions. Two more names will be drawn as alternates since scholarships cannot be carried over to future years. Alternates will only be utilized in the event that the original winner(s) are unable to attend.

The winners will be responsible for their own transportation to and from the workshop location and for any cost of materials used in the class. The material costs vary according to the class chosen, but if your finances are limited, you can choose a less expensive class. Payment by the Montgomery Gem & Mineral Society for classes is based on double occupancy fee – if you choose to room alone, you will incur the additional cost. You must prepay for your class and then remit copies to the club for reimbursement.

A trip to the workshop is an excellent opportunity to increase your lapidary skills as well as to encounter other rock hounds and to enjoy a full week of hands-on training with room and board included. Give it your best shot. Someone will win and it could just be you.



Do you have ideas for our newsletter?

Do you have suggestions as to what YOU would like to see in our newsletter?

Then email me!

amandamagnoliabrown@yahoo.com









